



ELEVATE



by LABEL®



# ELEVATE

## ‘LIFE IS SPORT AND SPORT LIVES IN LIFE’

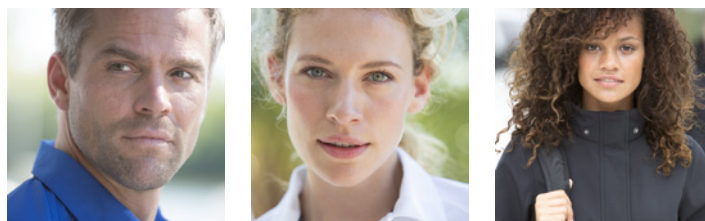
Elevate was created to lift our individual and collective spirit. Conceived in 2006, it combines innovative fabrics with urban style through a brand that reflects our passion for design, innovation and personal expression.

Elevate burst onto the world stage as the 2010 Vancouver Winter Olympics licensee, showcasing its leading design and universal appeal.

While having its roots in Canada, Elevate continues to resonate with markets globally and is now launched in Europe.

Elevate uses proven construction methods and modern fabrics engineered for superior comfort and durability.

This effortless collection balances a fashionable combination of outdoor and urban trends.







ELEVATE



**ELEVATE**





NEW



## NANAIMO T-SHIRT

♂ 38011 S-XXXL

♀ 38012 S-XXL

**Single Jersey, 100% Ringspun combed cotton.**  
160 g/m<sup>2</sup>

- Side seams
- 1x1 rib collar without stitching on the outside
- Chainstitching
- Tonal print at back
- Pre-shrunk
- Satin shoulder to shoulder tape
- Decoration friendly, smooth surface for printing
- Soft feel against the skin
- Classic short sleeve silhouette
- Pick-Stitch details

Recommended decoration: Colourprint  
Compliance: AZO • Formaldehyde • PCP • Uses non-carcinogenic dyestuff • APEO

♂ ♀

Qty.	50	100	250	1.000
€	6,70	6,55	6,30	6,10



> 01  
white



> 25  
red



> 33  
orange



> 38  
plum



> 44  
blue



> 49  
navy



> 60  
forest



> 68  
apple green



> 95  
anthracite



> 99  
black



♂ 3801199  
♀ 3801299  
black



♂ 3801125  
♀ 3801225  
red

*Quality fabric and trimmings  
come together with on-trend design  
features to make this all-purpose  
t-shirt a cut above the rest.*



♂ 3801144  
♀ 3801244  
blue



♂ 3801133  
♀ 3801233  
orange



♂ 3801195  
♀ 3801295  
anthracite



♂ 3801160  
♀ 3801260  
forest



♂ 3801138  
♀ 3801238  
plum



♂ 3801168  
♀ 3801268  
apple green

# EVERYDAY QUALITY



♂ 3801149  
♀ 3801249  
navy



♂ 3801101  
♀ 3801201  
white



**ELEVATE**





NEW



## KAWARTHA V-NECK T-SHIRT

♂ 38016 S-XXXL

♀ 38017 S-XXL

**Single Jersey, 95% Organic Ring spun cotton, 5% Elastane.**  
200 g/m<sup>2</sup>

- Side seams
- V-neck
- Self fabric collar
- Tonal print at back
- Satin neck tape
- Can be worn as a top layer or under a sweater
- Super soft stretch cotton fabric
- Soft feel against the skin
- Pick-Stitch details

Recommended decoration: Colourprint  
Compliance: AZO • Formaldehyde • PCP • Uses non-carcinogenic dyestuff • APEO

♂ ♀

Qty.	50	100	250	1.000
€	11,65	11,30	10,95	10,60



> 01  
white



> 25  
red



> 38  
plum



> 44  
blue



> 49  
navy



> 95  
anthracite



> 99  
black





NEW



## NIAGARA COOL FIT T-SHIRT

♂ 39010 S-XXXL  
 ♀ 39011 S-XXL  
 ♂ 39012 104-152

**100% Polyester Mesh.**  
 145 g/m2

- Satin neck tape
- Reflective logo print at back
- Cool Fit
- Thin flatlock on raglan seam
- Small double needle stitching on sleeve and bottom hem.
- Fine quality mesh knit

Recommended decoration: Colourprint  
 Compliance: AZO • Formaldehyde • Uses non-carcinogenic dyestuff • APEO

♂ ♀

Qty.	25	50	100	500
€	14,00	13,55	13,20	12,80

♂

Qty.	25	50	100	500
€	12,80	12,35	12,00	11,65



> 01  
white



> 25  
red



> 33  
orange



> 44  
blue



> 49  
navy



> 68  
apple green



> 99  
black







NEW



## KINGSTON COOL FIT T-SHIRT

♂ 39013 S-XXXL

♀ 39014 S-XXL

**Single Jersey knit of 88% Polyester, 12% Elastane.**  
200 g/m<sup>2</sup>

- Self fabric collar
- Satin neck tape
- Raglan sleeves
- Cool Fit
- Reflective logo print at back
- Narrow contrast colour flatlock on raglan sleeves
- Small double needle stitching on sleeve and bottom hem.
- Shaped seams for flattering fit

Recommended decoration: Colourprint  
Compliance: AZO • Formaldehyde • Uses non-carcinogenic dyestuff • APEO

♂ ♀

Qty.	25	50	100	500
€	23,40	22,70	22,00	21,30



> 01  
white



> 49  
navy



> 99  
black





NEW



## CALGARY POLO

♂ 38080 S-XXXL

♀ 38081 S-XXL

♀ 38082 104-152

**Pique knit, 100% Cotton.**  
200 g/m<sup>2</sup>

- Pre-shrunk
- 1x1 rib collar and cuffs
- Satin neck tape
- Side slit with satin tape on inside
- Forwarded shoulder seam with chain stitching
- Tonal logo print at back
- Mens and Kids 2 button placket with engraved buttons
- Ladies 3 button placket with engraved buttons
- Corporate yet casual polo
- Pick-Stitch details

Recommended decoration: Colourprint  
Compliance: AZO • Formaldehyde • Uses non-carcinogenic dyestuff • APEO

♂ ♀	Qty.	25	50	100	500
	€	18,70	18,10	17,55	17,05

♂	Colour	50	100	250	1.000
€		14,00	13,55	13,20	12,80



> 01♂♀  
white



> 03♂  
white-navy



> 25♂♀  
red



> 26♂♀  
red-white



> 33♂♀  
orange



> 38♂♀  
plum



> 40♂♀  
light blue



> 44♂♀  
blue



> 49♂♀  
navy



> 60♂♀  
forest



> 68♂♀  
apple green



> 95♂♀  
anthracite



> 99♂♀  
black





♂ 3808025  
 ♀ 3808125  
 ○ 3808225  
 red



♂ 3808003  
 ♀ 3808103  
 ○ 3808203  
 white-navy



♂ 3808049  
 ♀ 3808149  
 ○ 3808249  
 navy



♂ 3808033  
 ♀ 3808133  
 ○ 3808233  
 orange

*Corporate meets casual with this classic polo shirt. Subtle details add a touch of class, making it the perfect way to stay looking smart while feeling at ease.*



♂ 3808068  
 ♀ 3808168  
 ○ 3808268  
 apple green



♂ 3808095  
 ♀ 3808195  
 ○ 3808295  
 anthracite



♂ 3808038  
 ♀ 3808138  
 ○ 3808238  
 plum



♂ 3808044  
 ♀ 3808144  
 ○ 3808244  
 blue



**ELEVATE**



♂ 3808060  
♀ 3808160  
○ 3808260  
forest



♂ 3808026  
♀ 3808126  
○ 3808226  
red-white

# EASY STYLE



♂ 3808099  
♀ 3808199  
○ 3808299  
black



♂ 3808040  
♀ 3808140  
○ 3808240  
light blue



♂ 3808001  
♀ 3808101  
○ 3808201  
white





NEW



## MARKHAM POLO

♂ 38084 S-XXXL

♀ 38085 S-XXL

**Double Piqué, 95% Cotton, 5% Elastane.**  
200 g/m<sup>2</sup>

- Tonal logo print at back
- Contrast coloured half moon
- Satin neck tape
- Mens with 3 button placket, Ladies with 4 button placket with engraved tone on tone buttons
- Contrast coloured V-inserts at sideslit
- Pick-Stitch details

Recommended decoration: Colourprint  
Compliance: AZO • Formaldehyde • Uses non-carcinogenic dyestuff • APEO

♂ ♀

Qty.	25	50	100	500
€	22,25	21,55	20,80	20,25



> 01  
white-anthracite



> 25  
red-anthracite



> 49  
navy-anthracite



> 95  
anthracite-black



> 99  
black-anthracite





NEW



## OTTAWA COOL FIT POLO

♂ 39082 S-XXXL

♀ 39083 S-XXL

**Piqué, 100% Polyester.**  
220 g/m<sup>2</sup>

- Cool Fit
- Reflective logo print at back
- Satin neck tape
- Logo engraved buttons
- Small double needle stitching on sleeve and bottom hem.
- Thin flatlock on raglan seam

Recommended decoration: Colourprint  
Compliance: AZO • Formaldehyde • Uses non-carcinogenic dyestuff • APEO

♂ ♀

Qty.	25	50	100	500
€	23,40	22,70	22,00	21,30



> 01  
white



> 25  
red



> 33  
orange



> 44  
blue



> 49  
navy



> 60  
forest



> 68  
apple green



> 99  
black





NEW



**ELEVATE**



## SURREY SWEATER

38210 XS-XXXL

**Knit of 80% Cotton and 20% Polyester, brushed inside.**  
300g/m<sup>2</sup>

- 2x2 rib knit v-insert at centre front
- 2x2 Rib cuffs and waistband
- Tonal logo print at back
- Satin shoulder to shoulder tape
- Brushed inside for soft, warm and comfortable feel

Recommended decoration: Embroidery  
Compliance: AZO • Formaldehyde • PCP • Uses non-carcinogenic  
dyestuff • APEO

Qty.	10	20	50	100
	€ 35,20	34,00	33,05	32,00



> 01  
white



> 25  
red



> 40  
light blue



> 44  
blue



> 49  
navy



> 60  
forest



> 95  
anthracite



> 99  
black





NEW

**ELEVATE**



## ARORA HOODED FULL ZIP SWEATER

♂ 38211 S-XXXL

♀ 38212 S-XXL

⊙ 38213 104-152

**Knit fabric of 80% Cotton and 20% Polyester, inside brushed.**  
300g/m<sup>2</sup>

- 2x2 rib knit side panels, waistband and cuffs
- Kangaroo pocket
- Mens and ladies with drawstring in the hood
- Single jersey lining inside the hood
- Self fabric halfmoon inside
- Satin neck tape
- Contrast coloured herringbone tape inside hood
- Tonal logo print at back
- Antique silver eyelets with engraved logo
- Brushed inside for soft, warm and comfortable feel

Recommended decoration: Colourprint  
Compliance: AZO • Formaldehyde • PCP • Uses non-carcinogenic dyestuff • APEO



> 01 white



> 25 red



> 33 orange



> 44 blue



> 49 navy



> 60 forest



> 95 anthracite



> 99 black

♂ ♀

Qty.	10	20	50	100
€	55,20	53,40	51,75	50,25

⊙

Qty.	10	20	50	100
€	38,25	37,30	36,25	35,20



♂ 3821149  
♀ 3821249  
⊖ 3821349  
navy



♂ 3821160  
♀ 3821260  
⊖ 3821360  
forest



*The hooded sweater is always a favourite and this zip-up model incorporates current fashion features for an up-to-date look. The ultimate in warm layer comfort that's handy to have wherever you are, indoors and out.*

♂ 3821101  
♀ 3821201  
⊖ 3821301  
white



♂ 3821133  
♀ 3821233  
⊖ 3821333  
orange



♂ 3821195  
♀ 3821295  
⊖ 3821395  
anthracite





♂ 3821199  
♀ 3821299  
⊖ 3821399  
black



♂ 3821125  
♀ 3821225  
⊖ 3821325  
red



♂ 3821144  
♀ 3821244  
⊖ 3821344  
blue

# WARM LAYER FAVOURITE



**ELEVATE**

LABEL 29





NEW



## BROSSARD MICRO FLEECE JACKET

♂ 39482 S-XXXL

♀ 39483 S-XXL

**100% Polyester micro fleece, two sides brushed, one side antipilling.**  
190g/m<sup>2</sup>

- Hand pockets with zippers
- Elastic binding at the cuffs and the bottom of jacket
- Thumb holes
- Raglan sleeves
- Insulating
- Satin neck tape
- Light weight fleece jacket
- Inner stormflap with chinguard
- Contrast coloured bartacks at pocket

Recommended decoration: Embroidery  
Compliance: AZO • Formaldehyde • Uses non-carcinogenic dyestuff • APEO

♂ ♀

Qty.	10	20	50	100
€	41,05	39,75	38,60	37,40



> 01  
white



> 25  
red



> 44  
apple green



> 49  
blue



> 68  
navy



> 95  
anthracite



> 99  
black

♂ 3948249  
♀ 3948349  
navy



♂ 3948201  
♀ 3948301  
white

*When the temperature drops, you'll never want to be far from this lightweight insulating fleece. Comforting and versatile for when you're playing sport, travelling or simply lounging around.*



♂ 3948268  
♀ 3948368  
apple green



♂ 3948244  
♀ 3948344  
blue



♂ 3948295  
♀ 3948395  
anthracite

# COLD WEATHER BUDDY

FLEECE



♂ 3948299  
♀ 3948399  
black



♂ 3948225  
♀ 3948325  
red



**ELEVATE**

LABEL 33





## MANI POWER FLEECE JACKET

♂ 39480 S-XXXL

♀ 39481 S-XXL

**Jersey knit of 89% Polyester and 11% Elastane, brushed inside.**

245 g/m<sup>2</sup>

- 4 way stretch
- Thumb holes
- Elastic binding at the cuffs and the bottom of jacket
- Inner stormflap with chinguard
- Media pocket inside right pocket
- Reflective logo print at back
- Insulating
- Sleeve and hand pockets with zippers
- Satin neck tape
- Reflective tape next to front zipper and at centre back neck

Recommended decoration: Colourprint  
Compliance: AZO • Formaldehyde • Uses non-carcinogenic dyestuff • APEO

♂ ♀

Qty.	10	20	50	100
€	58,70	56,95	55,20	53,55



> 01  
white



> 25  
red



> 49  
navy



> 99  
black



- 1 • INNER STORMFLAP WITH CHINGUARD
- 2 • REFLECTIVE TAPE NEXT TO FRONT ZIPPER AND AT CENTRE BACK NECK
- 3 • MEDIA POCKET INSIDE RIGHT POCKET
- 4 • SLEEVE AND HAND POCKETS WITH ZIPPERS
- 5 • REFLECTIVE LOGO PRINT AT BACK
- 6 • ELASTIC BINDING AT THE CUFFS AND THE BOTTOM OF JACKET  
• THUMB HOLES

# MANI POWER FLEECE JACKET

♂ 39480

♀ 39481



- INSULATING
- 4 WAY STRETCH





NEW



## LANGLEY SOFTSHELL JACKET

♂ 39311 S-XXXL

♀ 39312 S-XXL

**90% Polyester, 10% Elastane Woven fabric bonded with 100% Polyester micro fleece.**  
300 g/m<sup>2</sup>

- Detachable hood with elastic cord and stoppers
- 5000 mm waterproof
- Reversed zippers at centre front and in hand pockets
- Adjustable cuff with flap with velcro closure
- Reflective logo print at back
- Windproof
- 3000 mm Breathable
- Easy grip zipper pullers

Recommended decoration: Colourprint  
Compliance: AZO • Formaldehyde • Uses non-carcinogenic dyestuff • APEO

♂ ♀

Qty.	2	5	25	50
	€ 93,55	90,70	88,00	85,30



> 25  
red



> 49  
navy



> 95  
anthracite



> 99  
black





NEW



## CHATHAM SOFTSHELL JACKET

♂ 38307 S-XXXL

♀ 38308 S-XXL

**95% Polyester, 5% Elastane woven fabric bonded with 100% Polyester micro fleece.**  
315 g/m<sup>2</sup>

- Detachable hood with elastic cord and stoppers
- 2 way front zipper
- Hand and chest pockets with zippers
- Inner rib cuffs
- Inner stormflap with chinguard
- Ladies 3/4 length with back slit
- 3000mm Waterproof, 800mm Breathable
- 4-way stretch fabric
- Stormflap with hidden snapbuttons and 2 way front zipper
- Mens with adjustable bottom with elastic cord and stoppers
- Pocket with media exit port on inside of garment

Recommended decoration: Colourprint  
Compliance: AZO • Formaldehyde • Uses non-carcinogenic dyestuff • APEO



> 99  
black

♂ ♀	2	5	25	50
Qty.				
	€ 129,00	124,95	121,20	117,55





NEW



## LABRADOR JACKET

♂ 39301 S-XXXL

♀ 39302 S-XXL

**100% Nylon Dobby Taslon with PU clear coating.**

- 5000/5000 Waterproof, Breathable
- Adjustable hood and bottom with elastic cord and stoppers
- Visor adjustable by metal wire
- Reversed zippers at centre front and in hand pockets
- Elasticated cuffs
- Fully tape seamed
- Inner stormflap with chinguard
- Reflective logo print at back
- Easy grip zipper pullers
- Can be worn alone or layered with the Scotia down jacket

Recommended decoration: Colourprint  
 Compliance: AZO • Formaldehyde • Uses non-carcinogenic dyestuff • APEO

♂ ♀

Qty.	2	5	25	50
	€ 105,00	102,10	99,05	96,00



> 01  
off white



> 25  
red



> 44  
blue



> 99  
black



- 1 •ADJUSTABLE HOOD AND BOTTOM WITH ELASTIC CORD AND STOPPERS
- 2 •VISOR ADJUSTABLE BY METAL WIRE
- 3 •INNER STORMFLAP WITH CHINGUARD
- 4 •REVERSED ZIPPERS AT CENTRE FRONT AND IN HAND POCKETS  
•EASY GRIP ZIPPER PULLERS
- 5 •REFLECTIVE LOGO PRINT AT BACK
- 6 •ELASTICATED CUFFS

# LABRADOR

## JACKET

♂ 39301

♀ 39302



- 5000/5000 WATERPROOF, BREATHABLE
- FULLY TAPE SEAMED





NEW



## SCOTIA LIGHT DOWN JACKET

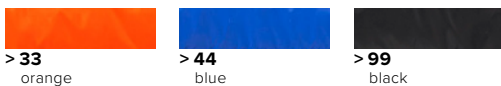
♂ 39305 S-XXXL

♀ 39306 S-XXL

**100% Nylon, 15D. 80/20 Down, 115 gsm.**

- Downproof pressed fabric
- Hand and chest pockets with zippers
- Sleeve pocket with zipper suitable for decoration
- Elastic binding at the cuffs and the bottom of jacket
- Inner stormflap with chinguard
- Water repellent, Breathable and Windproof
- Reflective logo print at back
- Light weight insulating down jacket
- Easy grip zipper pullers
- Can be worn alone or layered with the Labrador jacket

Recommended decoration: Colourprint  
 Compliance: AZO • Formaldehyde • Uses non-carcinogenic dyestuff • APEO



	♂	♀
Qty.	2	5
Price	€ 129,00	€ 124,95
Price	€ 121,20	€ 117,55



- 1 • INNER STORMFLAP WITH CHINGUARD
- 2 • SLEEVE POCKET WITH ZIPPER SUITABLE FOR DECORATION
- 3 • EASY GRIP ZIPPER PULLERS
- 4 • HAND AND CHEST POCKETS WITH ZIPPERS
- 5 • REFLECTIVE LOGO PRINT AT BACK  
• DOWNPROOF PRESSED FABRIC
- 6 • ELASTIC BINDING AT THE CUFFS AND THE BOTTOM OF JACKET

# SCOTIA LIGHT DOWN JACKET

♂ 39305

♀ 39306



- LIGHT WEIGHT INSULATING DOWN JACKET
- WATER REPELLENT, BREATHABLE AND WINDPROOF





NEW



## BLACKCOMB PARKA

38305 XS-XXXL

**100% Nylon ribstop with PU coating.**

- Waterproof front and pocket zippers
- Fully taped seams
- Adjustable bottom by elastic drawstring and stoppers
- Single jersey polyester elastane inner cuffs
- 5000 mm waterproof and 5000 mm Breathable
- Contrast coloured tafetta lining
- Zippers at chest and bottom to access the decoration areas
- Easy grip zipper pullers

Recommended decoration: Colourprint  
 Compliance: AZO • Formaldehyde • Uses non-carcinogenic dyestuff • APEO

♂	Qty.	2	5	25	50
		€ 129,00	124,95	121,20	117,55

> 95  
anthracite





NEW



## CALEDON DOWN PARKA

♂ 39309 S-XXXL

♀ 39310 S-XXL

**100% Nylon, Twill taffeta with downproof PU milky coating. 80/20 down, 350 gsm.**

- 8000/5000 Waterproof, Breathable
- Detachable hood with elastic cord and stoppers
- Hood flaps stowable in garages
- Handpockets with welded zippers
- Adjustable cuff with flap with velcro closure
- Adjustable bottom by elastic drawstring and stoppers
- Invisible zipper at back panel for decoration acces
- Reflective logo print at back
- Inner stormflap with chinguard
- Inside pockets

Recommended decoration: Colourprint  
 Compliance: AZO • Formaldehyde • Uses non-carcinogenic dyestuff • APEO



> 99  
 black

♂ ♀

Qty.	2	5	25	50
	€ 182,00	176,35	171,05	165,90



- 1 • INNER STORMFLAP WITH CHINGUARD
- 2 • INVISIBLE ZIPPER AT BACK PANEL FOR DECORATION ACCES
- 3 • DETACHABLE HOOD WITH ELASTIC CORD AND STOPPERS  
• HOOD FLAPS STOWABLE IN GARAGES
- 4 • HANDPOCKETS WITH WELDED ZIPPERS
- 5 • REFLECTIVE LOGO PRINT AT BACK
- 6 • ADJUSTABLE CUFF WITH FLAP WITH VELCRO CLOSURE

# CALEDON

## DOWN PARKA

♂ 39309

♀ 39310



•8000/5000 WATERPROOF, BREATHABLE





> **11104903**  
royal blue



> **11104900**  
white



> **11104901**  
black

NEW



**ELEVATE**

**APEX**

**100% Cotton chino twill.**

Self fabric strap velcro closure with rubber logo tab. Contrast interior crown tape. The cap has a pre-curved peak and embroidered eyelets.

Recommended decoration: Embroidery  
Compliance: AZO • Formaldehyde • PCP • Uses non-carcinogenic dyestuff



> **11104902**  
red



> **11104904**  
apple green

Qty.	50	100	250	1.000
€	5,82	5,65	5,48	5,31





> 11105004  
orange



> 11105000  
white



> 11105001  
black

NEW



ELEVATE

VERVE

100% Cotton twill, washed.

Self fabric strap engraved logo metal buckle with metal D-ring tuck-in. Contrast interior sweatband. The cap has a pre-curved peak and embroidered eyelets.

Recommended decoration: Embroidery  
Compliance: AZO • Formaldehyde • PCP • Uses non-carcinogenic dyestuff



> 11105002  
red



> 11105003  
ocean blue

Qty.	50	100	250	1.000
€	7,09	6,89	6,68	6,48





> 11105100  
white



> 11105101  
black



> 11105102  
navy



> 11105103  
khaki

NEW

  
ELEVATE

EXCEL

100% Cotton chino twill.

Open crown model that has a self fabric strap velcro closure with rubber logo tab. The cap has a pre-curved contrast sandwich peak.

Recommended decoration: Embroidery  
Compliance: AZO • Formaldehyde • PCP • Uses non-carcinogenic dyestuff

Qty.	50	100	250	1.000
€	5,92	5,75	5,58	5,41





> 11105203  
khaki



> 11105200  
white

NEW



ELEVATE

MOMENTUM

100% Polyester.

Self fabric strap velcro closure with rubber logo tab. The fabric is made of wicking mesh with wicking finish. Interior crown logo tape. The cap has a pre-curved contrast sandwich peak.

Recommended decoration: Embroidery  
Compliance: AZO • Formaldehyde • PCP • Uses non-carcinogenic dyestuff



> 11105201  
black



> 11105202  
navy

Qty.	50	100	250	1.000
€	8,34	8,10	7,85	7,62



11982500

NEW



ELEVATE

## TOTE

Canvas and leather.

On trend model tote with zippered main compartment that holds an inside organisation pocket and has a front zipper pocket. 34,5 x 7,5 x 40 cm

Recommended decoration: Colourprint 150 x 100 mm

Qty.	10	20	50	100
€	71,00	68,82	66,71	64,71



11982501



11982700

NEW



ELEVATE

## BRIEFBAG

Canvas.

Bag features an adjustable padded shoulderstrap, front zipper pocket, 15,4" laptop compartment and organisation panel inside the main compartment. 40 x 10 x 30 cm

Recommended decoration: Colourprint 150 x 100 mm

Qty.	2	5	25	50
€	85,00	82,47	80,00	77,65



11982701



11982801

NEW



**ELEVATE**

## OVERNIGHTER

**Canvas and leather.**

Small travel bag with adjustable padded shoulder strap and front zipper pocket.  
45 x 20 x 30 cm

Recommended decoration: Colourprint 150 x 100 mm



11982800

Qty.	2	5	25	50
€	118,00	113,41	110,00	106,71



11982601

NEW



ELEVATE

## MESSENGER

Canvas and leather.

Messenger features a zipper pocket in flap and an organisation panel underneath the flap. Main compartment with zippered closure and zipper pocket on the back.  
36 x 12 x 28 cm

Recommended decoration: Colourprint 150 x 40 mm



11982600

Qty.	2	5	25	50
€	91,00	88,12	85,41	82,94





11982301

NEW



ELEVATE

## MESSENGER

**Waterproof nylon.**

Waterproof messenger with welded seams, water resistant zippers and double sided coating, front flap has a zipper pocket and organisation panel underneath. Padded zippered pocket on back panel. Removable phone pocket on shoulder strap will fit iPhone 5.  
40 x 12 x 29 cm

Recommended decoration: Colourprint 80 x 40 mm



11982300

Qty.	2	5	25	50
€	129,00	125,88	122,12	118,47



11982401

NEW



ELEVATE

## TRAVEL BAG

**Waterproof nylon.**

Waterproof travel bag with welded seams, water resistant zippers and double sided coating, front zipper pocket and adjustable shoulder strap.  
62 x 35 x 33 cm

Recommended decoration: Colourprint 160 x 55 mm



11982400

Qty.	2	5	25	50
€	126,00	121,29	117,65	114,12



11982101



11982100

NEW



ELEVATE

## BACKPACK ROLLTOP

**Waterproof nylon.**

Waterproof backpack with welded seams, water resistant zippers and double sided coating, roll top closure, front zipper pocket and zippered padded pocket on back panel. Padded and adjustable shoulder straps. Phone pocket on shoulder strap will fit iPhone 5.  
31,5 x 18 x 59 cm

Recommended decoration: Colourprint 80 x 80 mm



Qty.	2	5	25	50
€	143,00	138,71	134,47	130,47



11982201



11982200

NEW



ELEVATE

## BACKPACK

**Waterproof nylon.**

Waterproof backpack with welded seams, water resistant zippers and double sided coating. Zippered pocket on top. Padded zippered pocket on back panel. Adjustable shoulder straps with phone pocket which will fit iPhone 5. Reinforced rubber top carry handle. 29 x 13 x 44,5 cm

Recommended decoration: Colourprint 90 x 130 mm



Qty.	2	5	25	50
€	128,00	123,53	119,76	116,24



NEW



## RETRO SUNGLASSES

This retro sunglasses packed in an imitation leather pouch with metal spring closure. Polarized lens and UV 400 protection. Packed in a giftbox.

Recommended decoration: Colourprint 60 x 100 mm  
Compliance: EN 1836

Qty.	25	50	100	500
€	22,70	22,00	21,29	20,71



10030100

NEW



## SPORTIVE SUNGLASSES

Sportive sunglasses with polarized lens and packed in hardcase pouch and giftbox. UV 400 protection.

Recommended decoration: Colourprint 20 x 7 mm  
Compliance: EN 1836

Qty.	10	20	50	100
€	33,50	32,47	31,53	30,59



10030000



10030200

NEW


  
ELEVATE

## ALL SEASONS SUNGLASSES

Black sunglasses with matt metal details.  
Polarized lens and UV 400 protection. Comes  
in an imitation leather pouch with metal spring  
closure. Packed in a giftbox.

Recommended decoration: Engraving 10 x 3 mm  
Compliance: EN 1836

Qty.	10	20	50	100
€	33,50	32,47	31,53	30,59



10028100

**NEW**



## SPORT SUNGLASSES

Sunglasses packed in hardcase pouch and giftbox.  
Polarized lens and rubber colored details. UV 400 protection.

Recommended decoration: Colourprint 10 x 3 mm  
Compliance: EN 1836



10028101

Qty.	10	20	50	100
€	41,00	40,00	38,82	37,65





**ELEVATE**