



ACTIVITY TRACKERS

AT801



WORLDSOURCE



PRIXTON AT801 ACTIVITY TRACKER

1PA01900

- Colour touch screen 0,96"
- Bluetooth 4.0
- Compatible with Android 4.4 or higher / IOS 8.1 or higher
- Heart rate, step counter, calories, sleep monitor, blood pressure measure
- Notifications
- Battery 80 mAH, stand by: 7 days
- Charge via direct USB
- Dimensions 450*11 mm, weight 25 gr
- IP67



PRIXTON AT400C ACTIVITY TRACKER

1PA02500

- Touch screen TFT (colour) 0,96"
- Bluetooth 4.0
- Compatible w/ Android 4.3 or above / IOS 8.0 or above
- Heart Rate, pedometer, calories, distance
- Sleep quality measurement
- Call reminder, message push, blood pressure
- sleeping monitoring, screen on when wrist movement
- Battery 80 mAH





- PRIXTON AT802 COLOUR ACTIVITY TRACKER**
1PA02600
- 0.96 Inch IPS TFT Screen, 80*160 resolution
 - Nordic 52832, ARM®Cortex™-M4, 64Kb + 512Kb
 - Heart rate, step counter, distance measurement, calories
 - Battery capacity: 100 mAh
 - Support iOS 8.0 and above, Android 4.4 and above
 - Device size: 260*39.8*10.8mm
 - Device Weight: 27g
 - IP67 splash resistant



- PRIXTON AT805 GPS ACTIVITY TRACKER**
1PA02800
- High end Nordic sensor-Nordic 52832
 - Colour 0.96" OLED Screen
 - Compatibility for IOS and Andriod
 - Multi-Motion support Wake/Run/Ride/Work out Mode
 - Accurate Dynamic heart rate can support
 - Automatic HR testing
 - GPS Integrated every -15/30/60/120 minutes monitor
 - Blood pressure monitor



- PRIXTON AT803 COLOUR ACTIVITY TRACKER**
1PA02700
- Colour touch TFT screen 1.3" 240x240
 - Heart rate, Blood oxygen, Blood pressure, Pedometer, Multiple sports
 - Sleep Monitor, Stopwatch Alarm, Notifications
 - Call reminder, Remote Camera
 - Battery Capacity: 170mAh
 - IP67 splash resistant



- PRIXTON AT810 ECG SMARTWATCH**
1PA04000
- LCD touchscreen 0.96" 160 x80
 - Processor Nordic nRF52832
 - Mobile phone notification alert
 - Monitoring daily exercise: steps, distance, calories...
 - Monitoring sports activities: cycling, running...
 - Quality of sleep and sedentary behaviour
 - Blood pressure and pulsometer
 - ECG function: Electrocardiogram
 - Reminder alarm function
 - Battery: 105 mAh
 - Compatible with iOS-Android
 - Bluetooth 4.0
 - IPX7 Splash resistant



ECG AT810

LCD touchscreen

Blood pressure and pulsometer

ECG function: Electrocardiogram

Bluetooth 4.0 





KIDS TRACKER GPS G300

- LCD touch screen 1,44"
- Operating System: Nucleus
- Battery: 500 mAh
- Photo camera
- Nano SIM card slot
- Location: GPS, AGPS, WIFI, LBS
- RAM: 32M / ROM: 32M
- Reminder alarm
- Alarm for geographical limitation
- 3 SOS + 10 default phone numbers



SMARTWATCHES

SWB221 1PA01300





PRIXTON SW16 SMARTWATCH
1PA00600

- Processor: MTK2502D
- Display: 1.44" TFT screen/ 128*128
- Bluetooth: BT4.0
- Battery capacity: 230mAh Lithium-ion battery
- Function: Reminder&Answer&Reject for Call&SMS
- Pedometer, Anti-lost, Alarm
- Sleeping monitor, Remote camera control...
- Size: 260x51x16mm



PRIXTON SW15 SMARTWATCH
1PA00500

- 1.54" 240x240 pixel IPS capacitive screen
- Compatible with iOS and Android
- SIM card and micro SD slot
- Bluetooth hands-free and telephone function
- Camera, Remote camera and mp3
- Notifications for social media and email...
- Pedometer, sleep and inactivity tracker
- 320 mAh battery
- Charging via Micro Usb



PRIXTON SWB221 SMARTWATCH
1PA01300

- 240 * 240 1.2" Round screen
- MTK2502D processor
- Compatible with IOS 7.1 or higher/Android 4.2 or higher
- Dimensions 230 * 45.5 * 13mm
- 280mAh Battery
- Bluetooth 4.0
- Functions: Sleep monitor, sedentary, pedometer, remote camera, notifications and calls





PRIXTON SWB25 WATERPROOF SMARTWATCH
1PA01500

- Display 1.54 Inch TFT resolution 240*240 pixel
- CPU MT2502D
- S.O: iOS y Android
- Dimension 48*39*12.5mm
- Waterproof: IP68 max. 3 meters
- Bt 4.0, compatible for IOS and Android
- Heart rate sensor
- 360 mAh Li-polymer battery
- Capacitive touchscreen
- Sleep monitor, pedometer, remote camera



PRIXTON SWB31 IP68 SMARTWATCH
1PA04290

- 1.28 inch customizable lcd Always on screen
- 50 Watchfaces selectable
- Compatible with iOS and Android
- Remote camera, pedometer, sedentary alarm and sleep monitor
- Dynamic heart rate monitor
- Notification of social networks, mail, incoming call
- Updatable by OTA
- 3ATM Water resistant
- Ultra long-lasting 200mAh battery.
- Charge by magnetic contact



PRIXTON SWB28 ECG SMARTWATCH
1PA02900

- Colour screen TFT (colour) 1,3 | 240*240
- Bt 4.0 compatible with ios and android
- Blood Pressure, Heart Rate, Electrocardiogram,
- Medication Remind
- Sleep Monitoring, Sedentary Reminder
- Steps, Calories, Distance, Wake up gesture, Phone, Message,
- Alarm Clock, Remote Camera, Search Phone
- Battery capacity: 220mAh
- IP67 splash resistant



PRIXTON SW36 GPS SMARTWATCH
1PA03000

- Full Round screen 1,3" 240*240
- Build-IN GPS,Compass,Barometer
- Accuracy Heart rate monitor.Multi-Sport Mode
- Uniq design with Micro Sim card hide inside strap
- Pedometer, sleep monitor
- IP65 splash resistant





PRIXTON SW41 SMARTWATCH
1PA03600

- Processor: MTK6580 Quad-core 1.3GHz
- OS Android 5.1 Lollipop
- Screen LCD: 1.39" 400×400 pixels
- RAM/ROM: 512MB/4GB
- SIM: Nano SIM
- Battery: 350 mAh
- Connections: Wifi and Bluetooth 4.0



SENIOR TRACKER GPS
G200

- Screen: 1.54 "240 x 240 color
- Functions: SOS call and voice chat
- Alarm due to geographical limitation
- Sedentary Control
- Alarm for reminders
- GPS with real-time location
- Battery: 600 mAh
- Bluetooth 4.0
- GPS with real-time location
- USB charging



EARBUDS

TWS 156C 1PA04703





**PRIXTON TWS153C BLUETOOTH® 5.0
EARBUDS**
1PA03900

- Touch control
- Bluetooth 5.0
- Earbuds Battery: 45 mAh
- Range 3-4 hours
- Hands-free function
- Stereo hands-free built-in
- Battery charging station: 350 mAh
- It includes silicone case



**PRIXTON TWS250 BLUETOOTH®
EARBUDS**
1PA04600

- Bluetooth 5.0
- Earbuds battery: 40 mAh
- Stereo hands-free built-in
- Battery charging station: 3.7V, 300 mAh
- Compact design
- Charging time: 1 hour



**PRIXTON TWS154C BLUETOOTH®
EARBUDS**
1PA04400/1PA04402/1PA04403

- Touch control
- Bluetooth 5.0
- Earbuds Battery: 45 mAh
- Range 3-4 hours
- Hands-free function
- Stereo hands-free built-in
- Battery charging station: 350 mAh
- Rubber finish
- Available in Black, Red and White





**PRIXTON TWS160S SPORT
BLUETOOTH® 5.0 EARBUDS**
1PA06790

- Bluetooth 5.0
- 40 mAh headset battery
- 800 mAh charging base battery
- Load power 5 V/120 mA
- Charging time 1 hour
- Music Autonomy 3 hours
- Call autonomy 3 hours
- Stand by 120 hours
- Maximum distance 10 meters



**PRIXTON LIVE PRO BLUETOOTH® 5.0
HEADPHONE**
1PA06690

- Live pro headphone with integrated ANC
- Active Noise Cancellation system, which eliminate the sound of outside noise, which makes an unique experience.
- The headphone is foldable and includes a round EVA case.
- The headphone has a button control system, to access all it's functions easily. Bluetooth 5.0, supporting a maximum distance of up to 10 meters.
- Including a removable auxiliary cable.





**PRIXTON TWS156C BLUETOOTH®
EARBUDS**
1PA04700/1PA04703

- Bluetooth 5.0
- Stereo hands-free built-in
- Battery charging station 550 mAh
- Maximum connection distance 15 m
- 1 hour charging time
- 4 hours play time



AUDIO

Ohana XS 1PA05000





**PRIXTON KEIKI
BLUETOOTH® SPEAKER**
1PA04800/ 1PA04802/1PA04855

- Output: 5W
- Bluetooth 5.0: connect two speakers at the same time, TWS function
- Connections: Bluetooth, AUX IN and TF cards
- Hands-free function
- Battery: 800 mAh
- Charge time: 2.5h
- Playback time: 5h
- IPX7: Splash resistant
- Dimensions: 9.6 x 8 x 3.6 cm
- Weight: 218 g



**PRIXTON ZEPPELIN W200
BLUETOOTH® SPEAKER**
1PA02000

- Bluetooth speaker with 16W RMS (8W*2)
- Integrated microphone for hands-free use
- Play music from your Bluetooth device or using its USB,
- Micro SD and 3.5mm aux connections
- 2400 mAh battery, more than 2 hours of continuous playback
- Bluetooth connection at up to 10 meters
- Dimensions 21.5 x 9cm





ALOHA SPEAKER 20W
1PA04900

- Power 20 W
- Bluetooth 4.2
- USB port
- 3,000 mAh battery
- Hands-free function
- IPX7 splash resistance
- ABS material
- Dimensions 20.6 x 7.8 x 7.8 cm
- Weight 860 g
- Maximum connection distance 10 meters



OHANA SPEAKER XS
1PA05000

- Power 10W
- Bluetooth 4.2
- Bluetooth connection, AUX IN and TF card
- 2,200 mAh battery
- Charging time 3 hours
- Play time 10 hours
- Hands-free function
- IPX7 water splash resistance
- Size 9.4 x 9 x 11 cm
- Weight 380 g



OHANA SPEAKER XL
1PA05100

- Power 30 W
- Bluetooth 4.2
- Bluetooth, AUX IN and TF cards connection
- 5.000 mAh battery
- Charging time 3.5 hours
- Play time 10 hours
- Hands-free function
- IPX7 splash resistant
- Dimensions 9 x 9.4 x 21 cm
- Weight 748 g

VINYL PLAYER/MP3 DECODER
1PA05202/1PA05236/1PA05255

- Power 3W
- 2 loudspeakers
- Bluetooth
- USB
- Aux IN
- Vinyl player with conversion to MP3
- Accessories: ceramic needle
- Speed 33.3/45/78 RPM



TURNTABLE
1PA05309/1PA05351

- Turntable with three speed selection: 33/45/78 RPM
- Direct MP3 recording via the USB port
- Plays music via USB, Bluetooth 4.2, Aux In and RCA
- Two 3W stereo speakers
- 100-240V-50/60Hz power supply and 5W power
- Output: DC 12V/0.5A
- Material: MDF with PVC laminate
- Dimensions: 398x260x120mm
- Weight: 2.7kg



CAMERAS





PRIXTON DV609 ACTION CAMERA
1PA20100

- Resolution video: 720P (1280x720) 30fps
- Actual resolution of 1.3 MPx
- Max. resolution of image 5MP
- Waterproof case - 10mt
- Compatible with external SD card up to 32GB
- Digital Zoom 4X
- Lithium battery 700 mAh
- Accessories: waterproof case, bicycle stand, helmet stand (up to 9 different applications)



PRIXTON DV660 ACTION CAMERA 4K
1PA20400

- 4k Resolution with 25Fps 1080p 60 Fps and slow
- Motion Real resolution: 8Mpx 170°
- 30 meters Water Proof
- Screen 2 "hd 320x240 pxi
- Memory expansion up to 32 gb
- Connection Usb 2.0 and Hdmi
- Accessories: two Water Proof cases in pink and blue, bicycle stand, helmet stand





PRIXTON IP200 CAMERA
1PA05500

- Resolution 1080P 1/3" CMOS 2 megapixel
- WiFi Connection IEEE 802.11B/G/N or RJ45 cable
- 3.6 mm lens with 355° horizontal and 120° vertical vision
- Night vision with infrared up to 10 m
- Speaker and microphone built in for two-way communication
- Slot for Micro SD cards enabling continuous 24-hour recording
- Simple installation. Plug & Play
- Access for up to six users at the same time
- Connection via free app
- Compatible with Android and iOS



**PRIXTON KIT610 ACTION CAMERA
ACCESSOIRES**
1PA05400

- Elastic Head Strap
- Chest harness
- Floaty Bobber + long screw + strap
- Monopod +adapter
- J-Hook Buckle
- Buckle Basic Mount
- 360 drgrees rotation Wrist band
- Flat and curved Adhesive Mount (8pcs)
- Bike Handlebar mount
- Mini adapter
- SJ4000 Camera standard frame
- Long screw
- L Size carrying Case

ON THE MOVE

Eco City Scooter



ECO CITY SCOOTER
1PA05700

- Wheel size 8.5” high-strength
- 350W engine with a maximum power of 400W
- Included 6000 mAh 36V battery
- 18 km range on a single charge
- Maximum speed 25 km/h
- Electric front brake
- Rear disc brake
- LCD screen with information
- Front and rear brake LED light
- High strength aluminium material



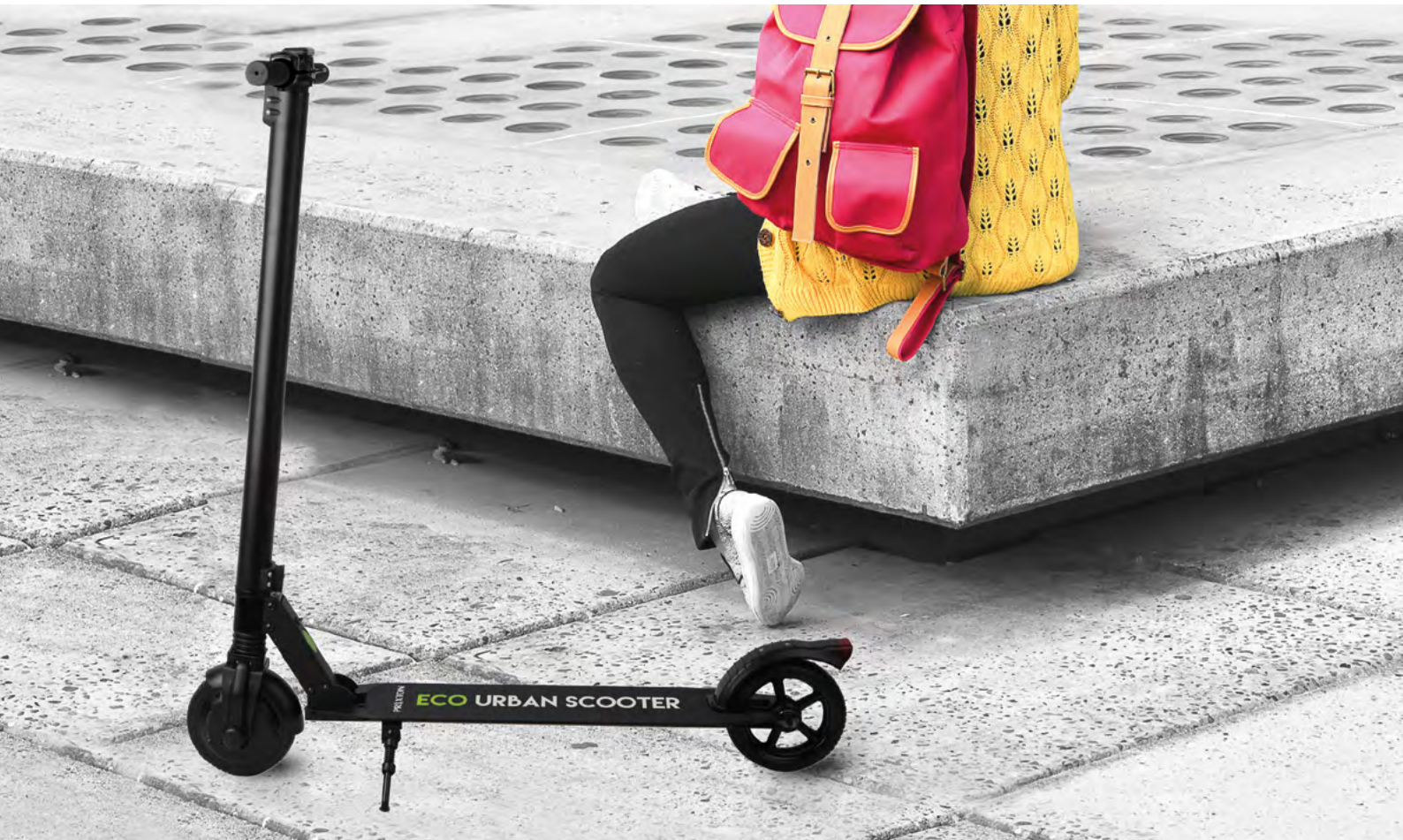
ECO URBAN SCOOTER
1PA05600

- Wheel size 6.5” high-strength
- 250W engine power with a maximum of 350W
- 4000 mAh 24V battery
- 10 km range on a single charge
- Maximum speed 24 km/h
- Electric front brake
- Rear disc brake
- LCD screen
- Front and rear brake LED light
- High-strength aluminium material



ECO KIDS SCOOTER
1PA07052

- 5” high strength wheel
- 22V / 2ah battery
- Maximum speed of 4-6 km / h
- 100W motor with a maximum power of 150W
- High strength aluminum material
- Maximum weight supported 50 Kg and minimum 15 Kg
- Manual brake on the rear wheel
- Approximately 5 km of autonomy with a single load
- Folding for convenient transportation and storage
- Dimensions 74 x 36 x 85/90/95 cm
- Weight 5.6 Kg





BIKE FIT 1PA05900

- Folding exercise bike, with 8 resistance levels.
- Includes support for Tablet or mobile
- Extra large screen that measures speed, time, distance and calories
- Easy to assemble and fold for convenient and simple storage
- Muscle and cardiovascular resistance training
- Maximum user weight recommended approx. 100 kg



RUN FIT 1PA05800

- 1000 W power
- 3" LED display: distance, calories, time...
- Side bars with sensors to measure pulsations
- Support for mobile or integrated tablet
- Adjustable speed: 1-10 Km/h
- 3 levels of manual tilt
- It has 2 wheels to transport and store
- Emergency braking system
- Maximum weight 100 Kg
- Measures 140.5 x 62.5 x 122.5 cm
- Measures folded 61 x 62.5x 124.5 cm
- Belt size 100 x 34 cm

DRONES



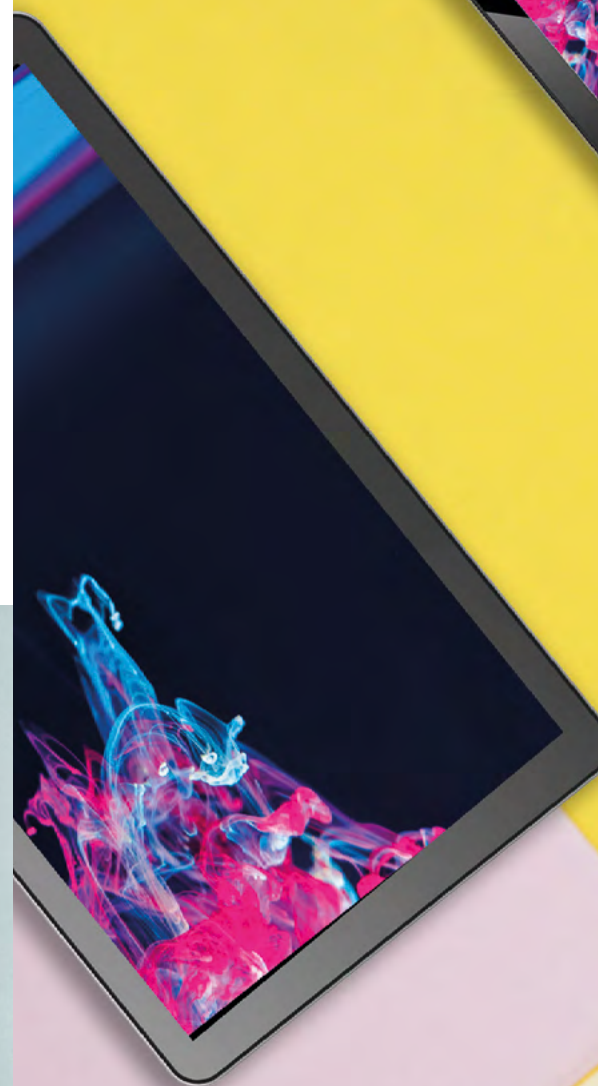
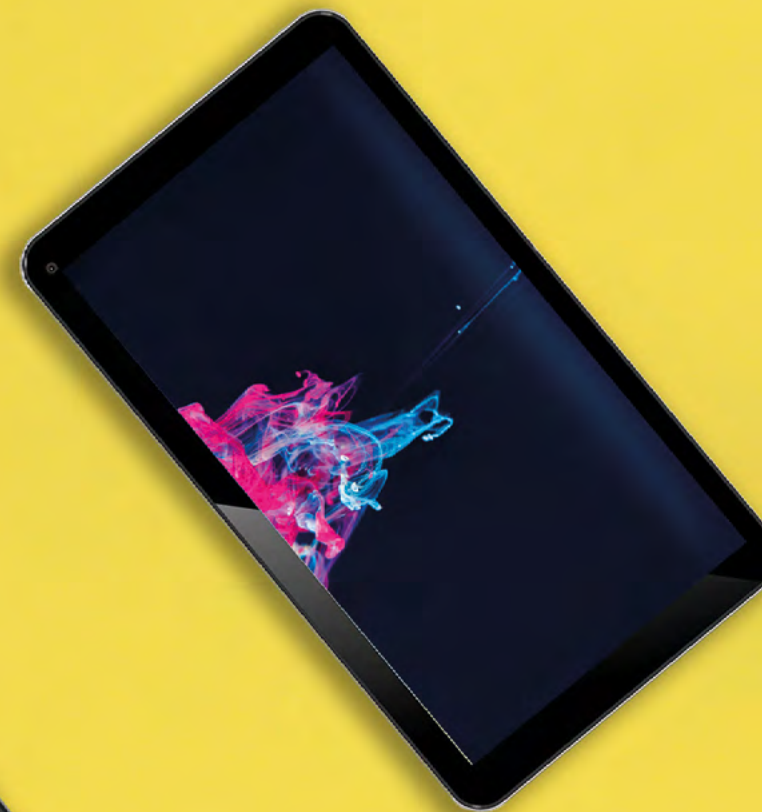


PREDATOR DR200 BATTLE DRONE
1PA50100

- Two drones and two controllers included
- Complete Kit Transport Box
- Stabilizing function of flight and turn 360 °
- Dimensions: 6.5 * 6.5 * 3.0 cm
- Battery 3.7 v 220mAh, duration of flight 5 mins approx.
- 6 * AAA Control
- Charging via USB for approx. 30 mins.
- Distance 30m



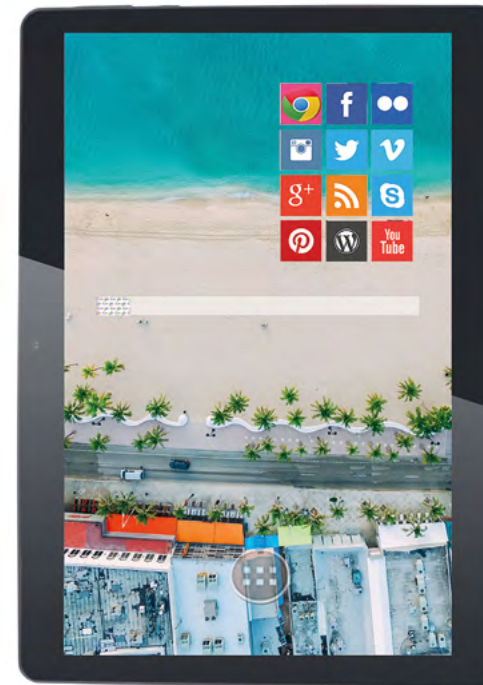
TABLETS & LAPTOPS





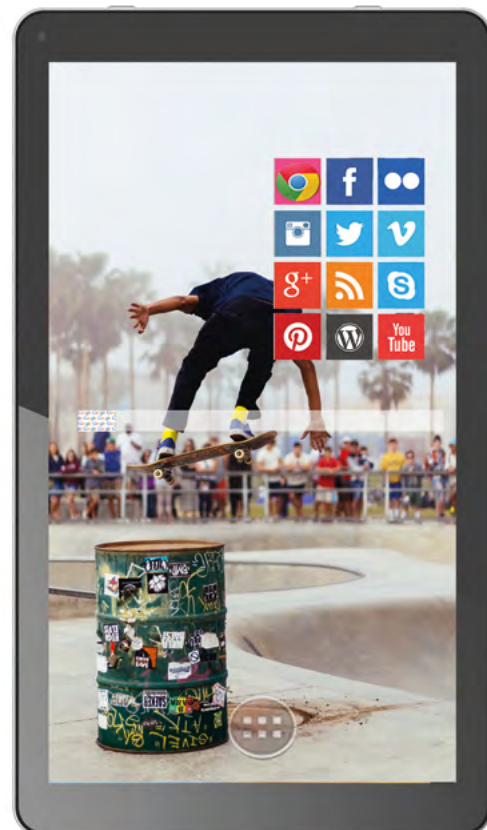
PRIXTON TABLET 7014Q+ ANDROID 1PA30100

- 7 inch HD capacitive screen with 1024x600 pixels
- O.S. Android 8.1
- Processor: Quad Core
- Internal Memory 8GB / RAM 1GB
- Wifi / Bluetooth / 3G external
- Frontal Camera



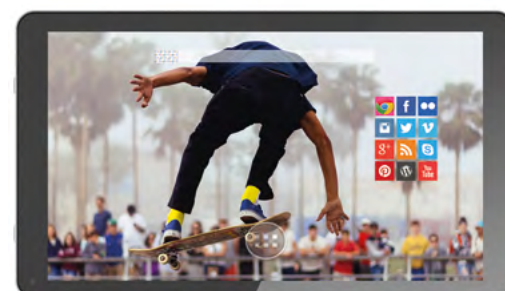
PRIXTON TABLET QUAD PRIXTON 1PA06000

- Screen 10.1" 800*1280 IPS
- Processor MTK6582, Quad Core
- 2GB+16GB
- WiFi+BT+ External 3G
- Camera 0.3MP+2.0MP
- OS Android 8.1
- 5000mAh batter
- Plastic case



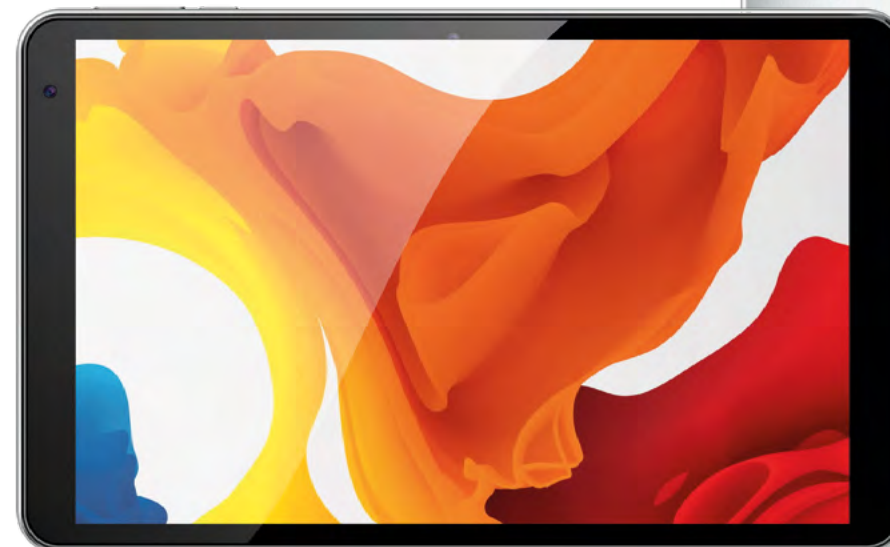
PRIXTON TABLET 1700Q ANDROID 1PA30200

- 10.1 inch capacitive screen with 1024x600 pixels
- Android 8.1 operating system
- Quad core processor
- 8GB internal memory and 1GB RAM
- WiFi, Bluetooth and support for external 3G
- Front and rear camera
- Micro USB port, micro SD slot and earphone socket
- 5000mAh lithium battery
- Includes charger and USB cable



PRIXTON TABLET 3G 2/32 1PA06100

- IPS 10.1" 800X1280 screen
- Android 9 operating system
- Quad Core Spreadtrum 7731E processor
- RAM: 2GB
- Internal memory: 32GB
- Micro USB input, micro SD, SIM card and headphones
- Wifi, Bluetooth and 3G connection
- 5.000 mAh Battery
- Front and rear camera





PRIXTION OCTA CORE TABLET 10” 3G
1PA06582

- IPS 10” screen
- Android 9 operating system
- Octa Core processor
- RAM: 3GB
- Internal memory: 64GB
- Micro USB input, micro SD, SIM card and headphones
- Wifi, Bluetooth and 3G connection
- Front and rear camera



FLEX PRO 4/64GB 11.6”
1PA06200

- Screen Dimensions 11.6” LCD
- Resolution 1366x768TN
- Operating system Windows 10
- Processor Intel ATOM Cherry Trail Z8350
- RAM 4GB
- Memory Internal 64GB / External MicroSD
- Wifi IEEE802.11b/g/n, Bluetooth 4.0
- Mini HDMI, USB, Jack 3.5mm
- Battery Lithium 8.000mAh
- Front camera
- AZERTY / QWERTY keyboard



NETBOOK PRO 4/64 14.1”
1PA06300

- 14,1” TN LCD 1366x768 Screen
- Windows 10 Operating system
- Intel Apollo Lake N3350 Processor
- RAM: 4GB
- ROM: 64GB
- Headphone output, USB 3.0, USB 2.0 and Mini HDMI ports
- Wifi IEEE 802.11 b/g/n, Bluetooth 4.0 connection
- 0,3 MP camera
- 10.000 mAh battery, DC IN 12V, A2 adapter
- 2x1W speakers
- AZERTY / QWERTY keyboard



SMART TV BOX 2/16GB
1PA06400

- Operating System: Android 7.1
- Processor: Amlogic S905 W de 2.0 GHz
- Quad Core ARM Cortex -A53
- RAM: 2GB
- ROM: 16GB
- Inputs: 2 USB, HDMI, MicroSD, AV, coaxial and optical
- Compatible formats: videos, audios and images
- Connection: Wifi 802.11b/g/n o red RJ4





PRIXTON PROJECTOR GOYA PY10
1PA03700

- Real resolution 800 x 480
- Lamp with output up to 2,800 lumens
- White LED light 40 Ansi Lumens / Contrast 500: 1
- LED bulb with more than 50,000h of reproduction
- Ability to project in size from 30 " to 150"
- Projection distance of 1 to 5 meters
- Direct connection of all types of players by HDMI
- Inputs: VGA, 2xHDMI, USB2.0, Micro-SD card and AV IN
- Playback of video, audio, photo and texts
- 2 stereo speakers and remote control included



PRIXTON CINEMA MINI PROJECTOR
1PA06890

- Resolution 320 x 240 / Compatible with 1080P Full H
- Lamp with output of up to 900 lumens
- White LED light 15 ANSI Lumens / 100: 1 Contrast
- LED bulb with more than 20,000 hours of playback
- Ability to project in size from 24" to 60"
- Projection distance of 1 to 2 meters
- Direct connection of all types of players via HDMI
- Inputs: HDMI, USB2.0, MicroSD, Aux IN and AV IN
- Video, audio, photo and text playback
- 2 stereo speakers and remote control included



PRIXTON



PRIXTON PROYECTOR LUMIÈRE
1PA06990

- Real resolution 1280 x 720
- Lamp with output of up to 5,000 lumens
- White LED Light 100 ANSI Lumens / Contrast 500: 1
- LED bulb with more than 50,000h of reproduction
- Ability to project in size from 30 "to 150"
- Projection distance from 1 to 5 meters
- Direct connection of all kinds of players via HDMI
- Inputs: VGA, 2xHDMI, USB2.0, MicroSD, Aux in and AV IN
- Playback of video, audio, photo and texts
- 2 stereo speakers and remote control included



HOME & KITCHEN

KG200





SQUEEZER PRO
160W

- Electric orange juicer with lever
- Safety nozzle anti lost, antiskid
- Juices effortlessly, quickly and conveniently
- Power: 160W
- Capacity: 800ml
- Material: stainless steel and heavy duty plastic
- Dimensions: 31 cm high x 21 cm in diameter



KITCHEN + PASTRY
KR100B

- Functions: knead, beat, mix, assemble and emulsify
- Powerful 1000 W motor with safety system
- Includes a large bowl of 4 liters
- 6 speeds + continuous speed
- With 3 stainless beaten accessories
- Easy to clean
- Elegant design



KR100W



COMPACT BLENDER
600W

- 600W | 2-speed control
- Filter and stainless steel blades
- Body made of stainless steel
- cup capacity 500ml
- Protection system to prevent overheating
- Dimensions: 26.5x 20x 33.6 cm





KITCHEN + PASTRY
KR200B

- Functions: knead, beat, mix, assemble and emulsify
- Power: 1000 W
- Integrated security system
- 6 speeds + continuous speed
- Inclined orbital head
- 4 L steel bowl and 3 steel accessories



ROBOT KITCHEN GOURMET
KG200

- 10 different chopping speeds and more turbo options
- LCD screen
- Power 1000W for heating, Power 800W for chopping
- Speed blades 45 - 5000 rpm
- Blades and jug: stainless steel
- Adjustable temperature 30° - 140°C
- 0-99 minute timer
- Weighing scale and accessories included



COFFEE MACHINE VERONA
Verona

- Functions: 1 coffee, 2 coffees and vaporizer to heat
- 850 W motor
- Italian pump with pressure of 20 bar
- Interior boiler in high-resistance aluminium
- Automatic function
- Double-layer, stainless steel filter holder
- Entire body in stainless steel
- Safety valve to release the pressure
- Excessive heat / pressure protection system
- 4 illuminated buttons: on/off, 1 cup, 2 cup and steam





- HIDRA HUMIDIFIER**
H5W
- H300ml tank
 - 1, 3 and 6-hour timer
 - Multi-coloured LED night light included
 - Size 16.7 diameter and 14.80 high
 - Accessories: AC charger, manual and measuring cup



- VACUUM PACKING MACHINE**
VS100
- Automatic and manual vacuum sealing system
 - 110W power
 - Degree of vacuum up to 60 Kpa
 - 3 mm heating band
 - Includes bags
 - Normal and fragile foods mode
 - Dry and liquid feeds mode



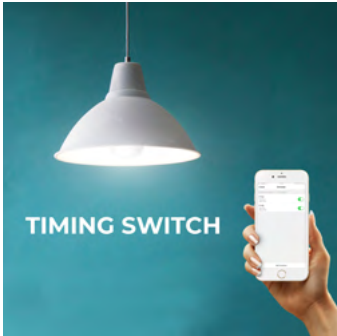
- BLUETOOTH SCALE**
BC200
- Bluetooth 4.0 data transfer
 - Analysis 6 in 1: weight, body mass, calories ...
 - Maximum capacity: 180 kg with division 100g
 - LCD: 50 * 35mm
 - Battery indicator or overload
 - 6 mm glass with 4 high precision sensors
 - Automatic on off
 - Dimension: 301 * 301 * 17.5mm





WIFI BULB
BW10

- Over 16 million colour shades to choose from
- Remote control from the APP
- More than 20,000 hours
- Timer and programmable for hours and days
- Voice control
- Adjustable brightness intensity
- Light bulb connection: E27
- 600+lumens power
- White color. Size: 60x120 mm. Weight: 40g



WIFI PLUG
EW10

- APP remote control
- Programmable in hours and days of the week
- Time switch included
- Operating temperature: 20°-50°
- Voltage: 100-240V
- Working current: 10A Max
- Power source: AC 100V- 125V, 50/60 Hz
- Reset: Keep 6 seconds pressed the power button
- White color. Size: 48x48x73 mm. Weight: 70g



ROBOT HOOVER
Spire 914

- Wet and dry cleaning
- 4 functions in 1: sweep, vacuum, mop and scrub
- Anti-fall sensors
- Auto charge and auto return to the charging station
- Remote control included
- 7-day scheduled cleaning option
- Two central rollers for fine and coarse dirt
- 2 tanks: water 250ml / dirt 400ml
- 2000mAh Li-ion battery
- Dimensions: 32x32x8.5cm



WIFI ROBOT HOOVER
Spire 916

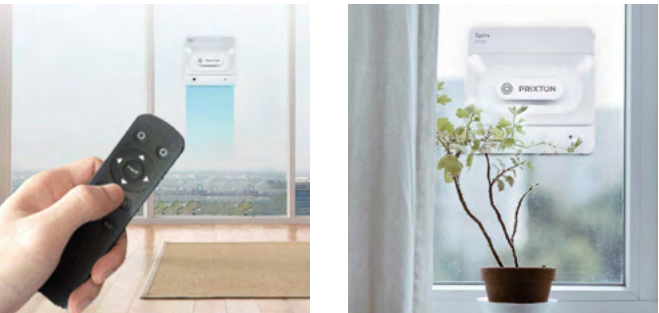
- Features
- Intelligent Navigation
- Generate a map in real time
- Plan a cleaning route
- Makes the tour 2 times
- Integrated cleaning patterns
- After cleaning it returns to its base load
- 2 modes: standard or deep cleaning
- Adjustment of cleaning power via APP
- Incorporates Wifi





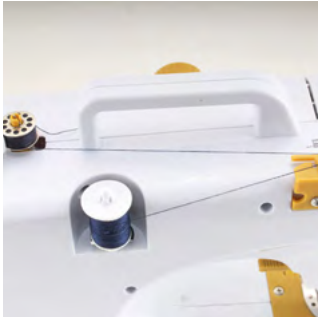
WINDOWS CLEANER SPIRE
BT200

- Charging Time: 1h
- Battery: 600 mAh 14.8V
- Cleaning Speed: 2.5 min/sqm
- Dimensions: 25x25x10 cm
- Net weight: 1.35 kg
- Input Voltage: AC100-240V 50/60Hz
- Adaptor: 24V, 75W



SEWING MACHINE
P120

- Works on batteries and plugged
- Featuring 16 built-in stitch patterns
- Double thread, double speed
- Forward and reverse sewing
- Uses hand switch or foot pedal to start
- Automatic thread rewind
- Four-step button hole sewing
- Built-in sewing light and drawer
- Includes thread cutter and presser foot
- Foot pedal and adaptor included



PRIXTON





MASSAGE ARMCHAIR 8 ENGINES

- Manual recline, massage function and warmth
- 8 different massage functions
- Relaxing and therapeutic warmth function
- Anti-slip bumpers
- Material: PU+PVC
- 65x89x101cm



PREDATOR GAMING CHAIR
10R/10B

- Gaming chair with adjustable height
- Reclining to 180°
- Armrests adjustable in 2 dimensions, height and angle
- Upholstered with 1.2mm thick PVC cover
- Metal frame and high-density foam filling
- Class 3 gas lift 100 mm
- Maximum load 140 kg
- Neck support cushion included



PRIXTON

